

1 U MTP ENCLOSURES

DESCRIPTION

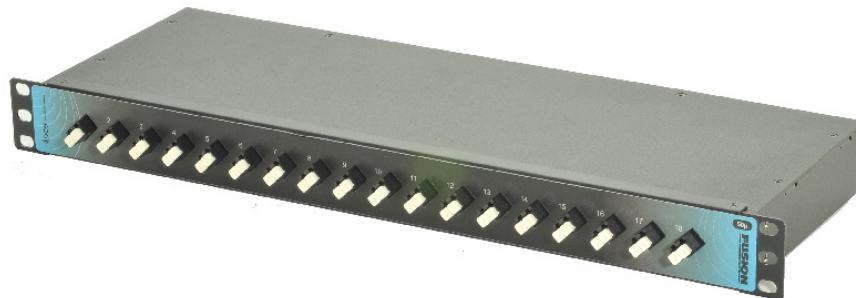
The 1U rack mountable Patch Panels are designed using MTP ribbon assemblies in a fully protected enclosure. This Rapid-Fiber-Link System allows MTP Patch Panels to be easily swapped out when connector requirements change, leaving the existing trunk cable assemblies in place. Utilizing MTP connections reduces total cost of ownership.

FEATURES/BENEFITS

- Color coded to easily identify fiber type
- 12, 18, 24, 36, and 48 (quad) LC port capacity
- 12, 18, 24 and 36 MTRJ port capacity
- 12, 18, and 24 ESCON port capacity
- 18 and 24 SC port capacity
- Mounts in 19, 23 or 24 inch rack

SPECIFICATIONS

- Rack Size: 1U Height
- Dimensions: (H x W x D) 1.72" x 19" x 7.25"
- Construction: High strength, lightweight aluminum
- Durable fine textured black powder coat finish



1U 18 Port MTP-LC Patch Panel



1U 48 Port MTP-LC Patch Panel Rear View