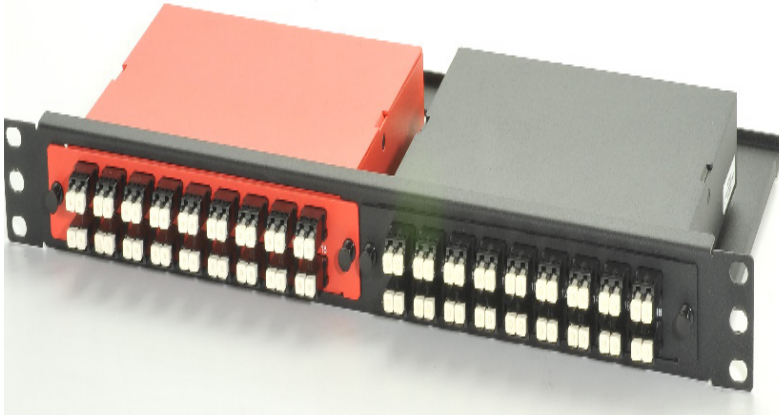


1 U DUAL FABRIC CASSETTES

DESCRIPTION

These 18 channel cassettes were designed for a dual fabric or redundant solution. They are designed using ribbon assemblies in a fully protected enclosure. These cassettes can easily be swapped out when connector requirements change, leaving the existing trunk cable assemblies in place. Utilizing MTP connections reduces total cost of ownership.



FEATURES / BENEFITS

- 36 LC port capacity
- Snap on mounting for fast and easy installation and removal

SPECIFICATIONS

Specifications:

Modular Panel

Dimensions: (H x W x D) 1.72 x 19.00" x 8.00"

Cassette

Dimensions: (H x W x D) 1.275 x 8.180" x 6.00"

- Construction: High strength, lightweight aluminum
- Durable fine textured black powder coat finish

