

## Description

The Fusion 4U rack mountable MTP Patch Panels are designed using ribbon assemblies in a fully protected enclosure. MTP Patch Panels can easily be swapped out when connector requirements change, leaving the existing trunk cable assemblies in place. Utilizing MTP connections reduces total cost of ownership.

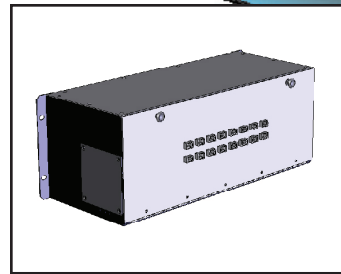
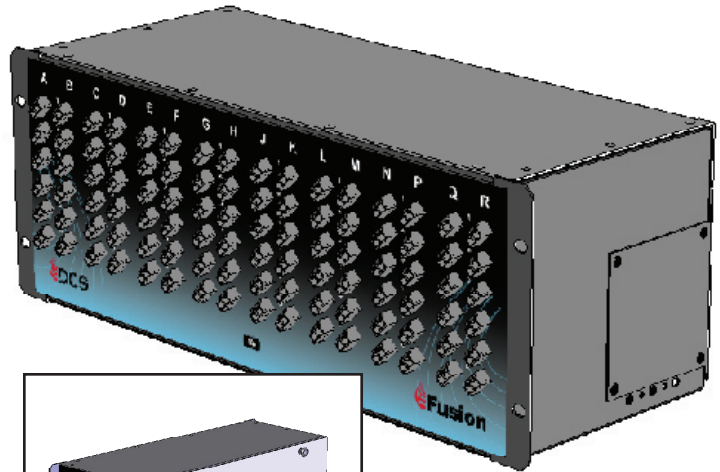
## Features / Benefits

- Color coded to easily identify fiber type
- 96 LC port capacity
- 96 MTRJ port capacity
- 72 ESCON port capacity
- Mounts in 19, 23 or 24 inch rack

## Specifications

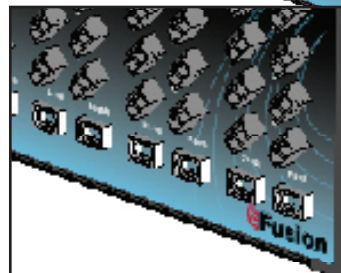
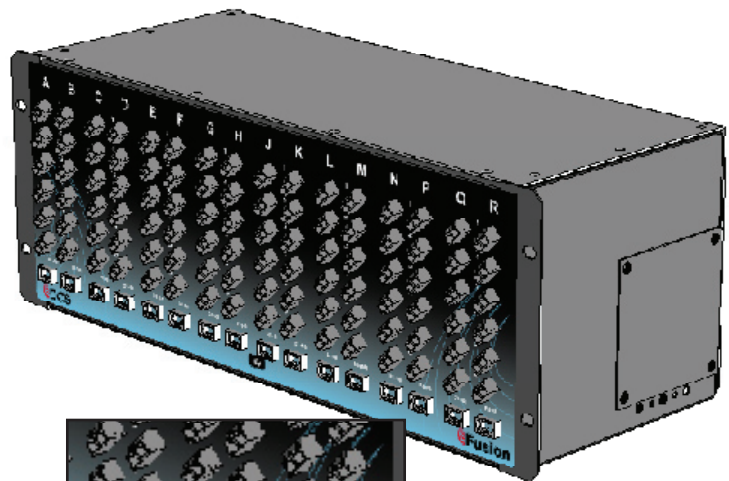
- Rack Size: 4U Height  
 Dimensions: (H x W x D) 6.97" x 19" x 7.25"  
 • Construction: High strength, lightweight aluminum  
 • Durable fine textured black powder coat finish

REAR ACCESS MTP



Rear View showing MTPs

FRONT ACCESS MTP (Back To Back Option)



Front View showing MTPs