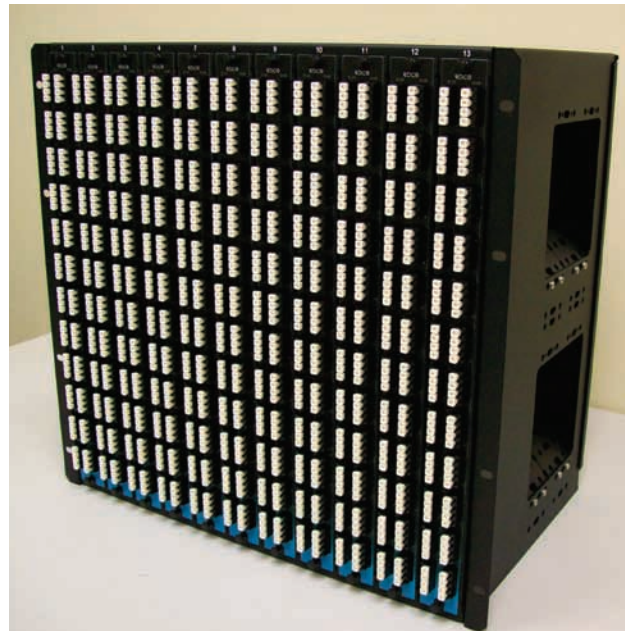


Director Patch Panels:

The 10U Director Patch Panels are used at the Main Distribution Area (MDA) or Central Patching Facility. Each patch panel has a port count to match the port count on the director card. By matching the port counts on the modules, you create mirror image of your director at the Central Patching Facility.

Panel Options:

- 12 channel LC
- 18 channel LC
- 24 channel LC
- 32 channel LC
- 48 channel LC



24ch



32ch



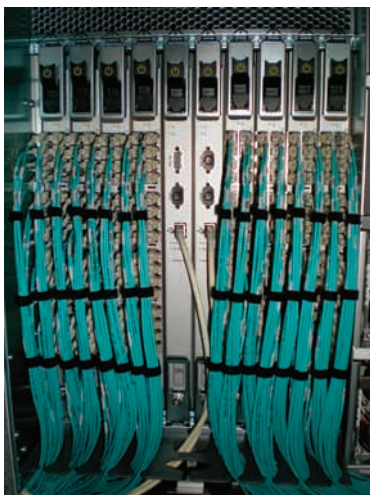
48ch



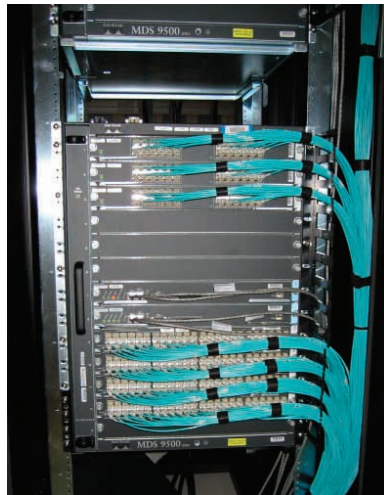
Custom Staggered Director Trunks

Custom staggered trunks help reduce slack when connecting a director, creating clean, well managed cabling.

Brocade 48000



Cisco 9513



Cisco 9513

